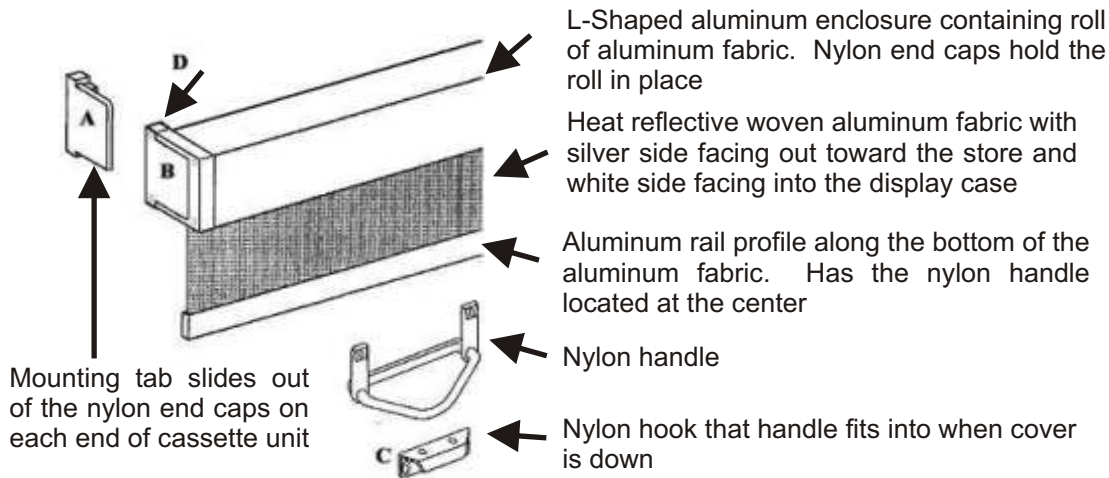


ECONO FROST

CASSETTE UNIT INSTALLATION INSTRUCTIONS

The Econofrost cassette is available in linear lengths of 4, 6 & 8 feet. The roll of woven aluminum fabric is designed to cover from the top of a display case opening to the bottom at a distance of 76 inches or less. When taking the unit out of the box, ensure the package containing the hook and **all** the screws is also taken out.



- ❄️ Choose the location for mounting - typically on the front of the display case canopy. *Ensure refrigerated air curtain vents are behind the night cover so cold air is not blocked from circulating into the display case. Some older cases have ambient air curtains which must be turned off when cover is in use.*
 - ❄️ Hold the Econofrost cassette unit up to the location where it will be mounted. Ensure cover is level before marking the location.
 - ❄️ Mark the intended position on the mounting surface by scribing the case at each end of the cassette



- ❄️ Slide the mounting tabs (**A**) out of the end caps (**B**)
 - ❄️ Line up mounting tabs with marks made on the display case canopy. Use the tabs as a template & mark where the holes are to be drilled.



- ❄️ Drill the holes to accept the sheet metal screws*
 - ❄️ Affix mounting tabs to display case using sheet metal screws.
 - ❄️ Slide the cassette unit (**B**) onto the mounting tabs (**A**) & secure by placing a set screw in the holes (**D**) provided on the nylon end caps.



- ❄️ Determine place at bottom of case to mount hook (**C**) - usually below bumper or molding. **Ensure the hook is centered with the handle.**
 - ❄️ Use hook as template to mark the holes to be drilled. Drill the holes and mount the hook using sheet metal screws.*
 - ❄️ Pull the Econofrost cover down and slip the handle onto the hook.

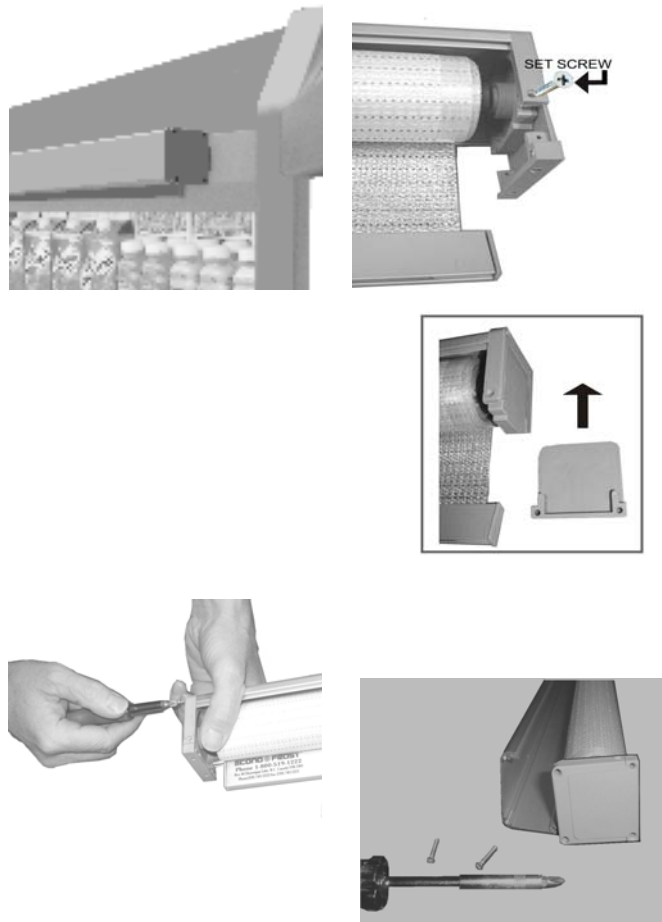
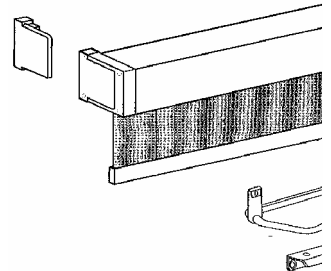
* self-tapping stainless steel screws (not supplied standard) will eliminate the need to pre-drill holes

Product Update Bulletin: January 2005

Econo*Frost Woven Aluminum Night Covers for Open Refrigerated Cases

Cassette Retro-fit Version (51100 Series*) – Retension

- This product version is identified by units with brushed Aluminum Cassette housing enclosed on two sides, cassette end-caps sized at 2-5/8" square in 2-piece mounting set, and woven aluminum fabric of matt silver look with reinforced edge taping
- The standard Econo*Frost cassette is available in linear widths of 4-, 6-, and 8-feet. The standard length of the woven aluminum fabric roll is designed to cover from the top of a display case opening to the bottom at distance of 76 inches or less.



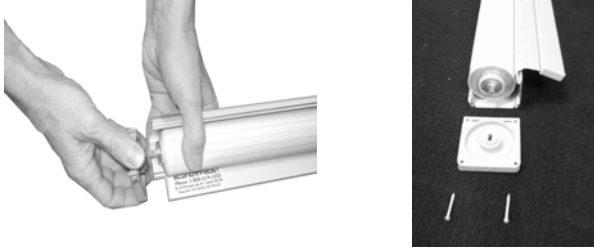
1) Cassette Unit Installed - Removal:

To remove the Econo*Frost unit installed on the case canopy, find the set-screws located at the base and top of each end-cap, then loosen.

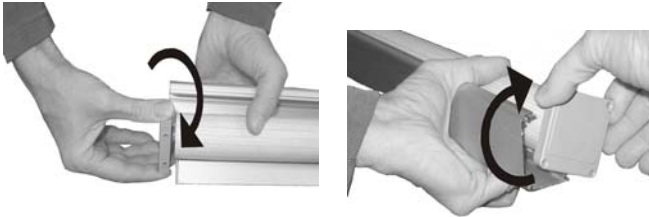
Slide off the cassette housing and spindle roll assembly from the plastic mounting end-cap 'ear' tabs.

- 2) To release the spindle (fabric roll) from the mounting end-caps, first check to identify the end with the 'spring' insert (a rectangular shaped, metal end-pin on the left side).

Carefully un-screw the end-cap screws (2) that attach the end-caps to the housing.



3) **Caution:** When releasing the I-shaped end-pin from the mounting slot be prepared for any residual spring tension to release suddenly.



4) To re-tension the spindle rotate the end-pin 18-25 times **clockwise** or until the tension feels sufficient.

Tip: Use an end-cap as a winding tool.

Caution: **DO NOT over-tension.**
DO NOT apply side pressure
(spring may break!)

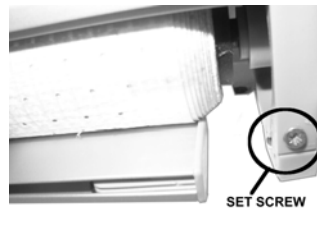


5) To lock the tension in place after winding the spindle, hold the end-cap in place while replacing the screws to re-attach to the aluminum cassette housing.



6) With the end-caps reattached, hold up the cassette unit and pull out the fabric to test for release tension and retraction.

** If not tension is not acceptable re-do steps 4-5, either with more or less turns, until satisfactory.*



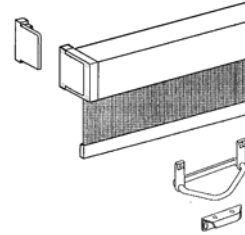
7) Re-attach the cassette unit to the case, sliding the end-caps over the mounting tab 'ears'.

Important:

Ensure the small set screws at the bottom of the end-caps are in place to lock the unit to the mounting tabs.

CASSETTE SPARE PARTS (51100 SERIES*)

This product version is identified by units with Aluminum Cassette housing enclosed on two sides, cassette end-caps sized at 2-5/8" x 2-5/8" square in 2-piece mounting set, and woven aluminum fabric with matt silver look and reinforced edge taping.



DRAWING	PART NUMBER	PART DESCRIPTION
	30521	Two-piece End-cap for cassette (Size 2-5/32" x 2-5/32")
	30532	Screw for cassette end-cap (Recommend using #6 Self Tapping Screws)

Parts Common to Both Non-Cassette and Cassette Product

	30522	Insert for spindle tube (right hand side)
	30514	Spring insert for spindle tube (left hand side) 25-19/32" long x 1-1/16" dia.
	30527	End-Cap for bottom aluminum rail profile
	30513	Handle for bottom profile (Incl. 2 mounting screws)
	30509	Hook for handle (Incl. mounting screws)

Delivery Terms: Warehouse 98230 F.O.B. Blaine, Washington State
USA

Payment Terms: Net 30 days from date of invoice on approved credit

Currency: US Dollars