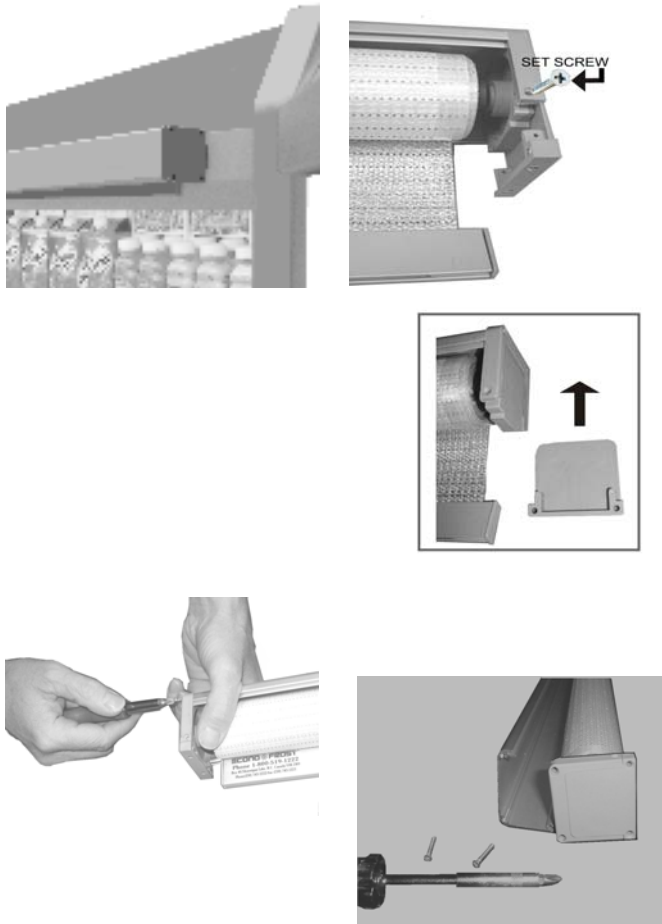
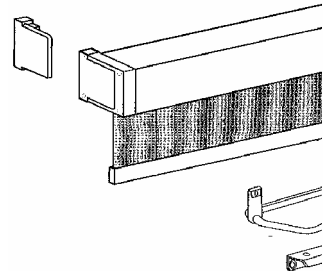


Product Update Bulletin: January 2005

Econo*Frost Woven Aluminum Night Covers for Open Refrigerated Cases

Cassette Retro-fit Version (51100 Series*) – Retension

- This product version is identified by units with brushed Aluminum Cassette housing enclosed on two sides, cassette end-caps sized at 2-5/8" square in 2-piece mounting set, and woven aluminum fabric of matt silver look with reinforced edge taping
- The standard Econo*Frost cassette is available in linear widths of 4-, 6-, and 8-feet. The standard length of the woven aluminum fabric roll is designed to cover from the top of a display case opening to the bottom at distance of 76 inches or less.



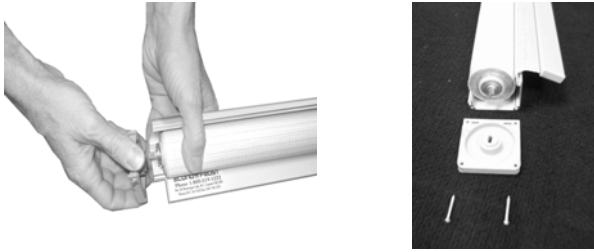
1) Cassette Unit Installed - Removal:

To remove the Econo*Frost unit installed on the case canopy, find the set-screws located at the base and top of each end-cap, then loosen.

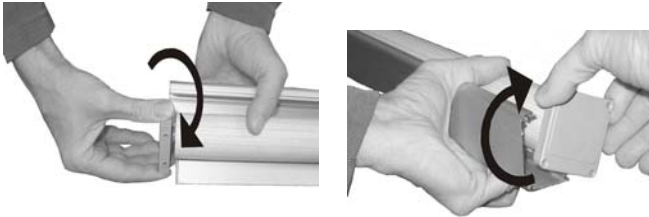
Slide off the cassette housing and spindle roll assembly from the plastic mounting end-cap 'ear' tabs.

- 2)** To release the spindle (fabric roll) from the mounting end-caps, first check to identify the end with the 'spring' insert (a rectangular shaped, metal end-pin on the left side).

Carefully un-screw the end-cap screws (2) that attach the end-caps to the housing.



- 3) **Caution:** When releasing the I-shaped end-pin from the mounting slot be prepared for any residual spring tension to release suddenly.



- 4) To re-tension the spindle rotate the end-pin 18-25 times **clockwise** or until the tension feels sufficient.

Tip: Use an end-cap as a winding tool.

Caution: **DO NOT over-tension.**
DO NOT apply side pressure
(spring may break!)

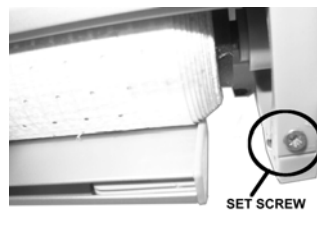


- 5) To lock the tension in place after winding the spindle, hold the end-cap in place while replacing the screws to re-attach to the aluminum cassette housing.



- 6) With the end-caps reattached, hold up the cassette unit and pull out the fabric to test for release tension and retraction.

** If not tension is not acceptable re-do steps 4-5, either with more or less turns, until satisfactory.*



- 7) Re-attach the cassette unit to the case, sliding the end-caps over the mounting tab 'ears'.

Important:

Ensure the small set screws at the bottom of the end-caps are in place to lock the unit to the mounting tabs.