

- A. Metal brackets, to be mounted facing and level to each other.
- B. Cross-shaped Hole
- C1, C2. Pins
- D. Spindle
- E. Round Hole
- F. Nylon Lock
- G. Nylon Handle
- H. Hook

All mounting hardware is included.

TO INSTALL:

Mount the right and left brackets (A) on the case, measuring the space between each part according to the linear length of the unit to be installed (please see template).

Insert the end of the spindle which has the rectangular shaped pin (C1) into the cross shaped hole (B) making sure that the arrow is pointing UP. This ensures that the fabric rolls off from the back of the unit. Place the small nylon lock (see figure 1) onto the round pin on the right side of the spindle (C2), ensuring that the slot side of the lock is toward the roll. The lock has a very thin slot which must be inserted into the corresponding slot in the bracket (A) so that the unit will lock in place. Once the pin and lock have been inserted into the bracket, turn the lock down 45° (see figure 2).

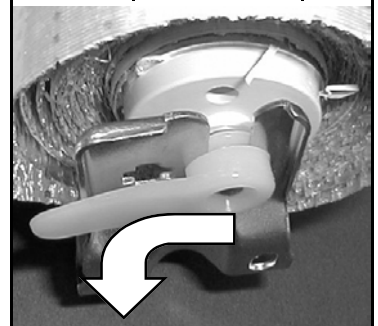
All units come from the factory pre-tensioned. If the unit does not release easily after mounting, simply grasp the installed unit in the center, and give it a one inch turn away from you, toward you again, repeating until you feel the lock give way.

Pull down the curtain and mark the position of the hook for the handle. Secure the hook with the screws provided.

figure 1



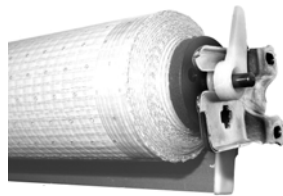
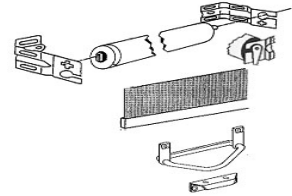
figure 2



Econo*Frost Woven Aluminum Night Covers for Open Refrigerated Cases

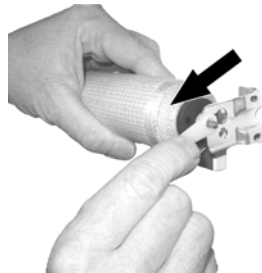
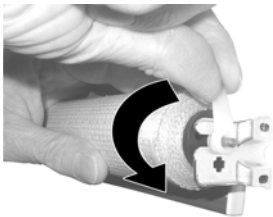
NON Cassette OEM Version (53100 Series*) – Retensioning

* This product version is identified by units with spindle end-pins with right side as round metal pin and left side as rectangular metal pin showing embossed arrow, mounting brackets of silver metal with keyhole- and cross-shaped slots, white plastic tear-drop shaped spindle holder safety catch for securing spindle to mounting brackets, and aluminum fabric with matt silver look and reinforced edge taping.

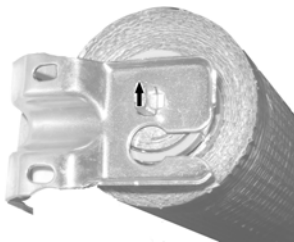


1) Non-Cassette Unit Installed:

To remove the Econo*Frost unit installed on the mounting end-brackets, find the white plastic tear-drop shaped safety catch located on the right side of the spindle (this is attached to the round metal pin insert).



2) To release the spindle roll from the mounting brackets, rotate the spindle holder safety catch until it is parallel or in-line with the mounting slot. Carefully pull the spindle roll away from the mounting bracket.



3) **Caution:** When pulling the spindle roll and the spring end-pin away from its mounting bracket be prepared for any residual spring tension to release suddenly.



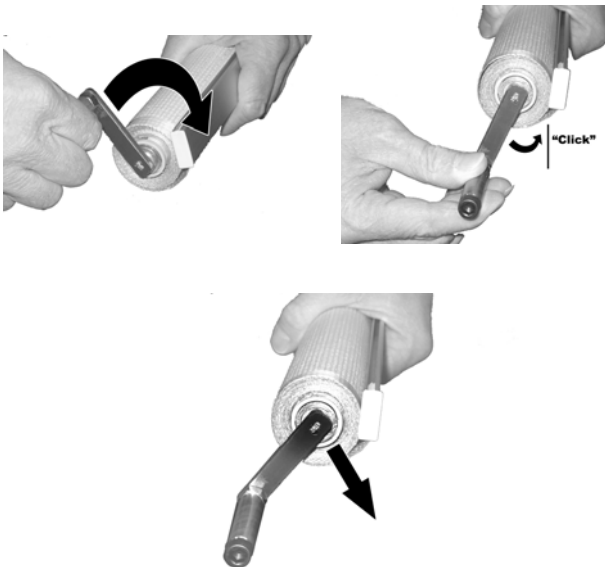
- 4) To re-tension the spindle roll rotate the spring end-pin 15-20 times* **clockwise** or until the tension feels sufficient.

Tip: Use tensioning tool or an extra mounting bracket or pair of vise-grip pliers as a winding tool

Caution: DO NOT over-tension
DO NOT apply side force

(spring and/or end-pin may break)

* The number of rotations required may vary depending on the width of Econo*Frost Unit (i.e. 8-ft may need more tension than a 4-ft.) Please ensure sufficient tension is applied for the size of roll used – too much tension will counteract the benefits of the braking mechanism. If the cover retracts too quickly, it is possible to release the tension with cover still mounted in the bracket by unwinding the spring a number of full turns in order to give a balanced tension vs braking combination. Release the right hand side of the roll from the mounting bracket slightly while keeping the left side still in its bracket and begin turning the roll.



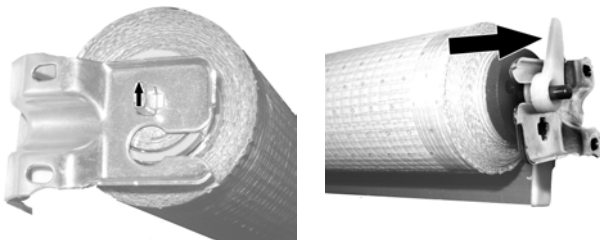
- 5) To lock the tension in place after winding the spindle, rotate ¼ turn in reverse until the locking mechanism activates; a slight nudge or 'click' may be felt when the tension locks.

(The lock will release to allow retraction when the unit is installed and the cover pulled down).

- 6) With the tension locked in place, remove the tool, and return the Econo*Frost unit to its mounting brackets.

- 7) Return the I-shaped spring insert end-pin first – ENSURE THE ARROW is POINTING UP

- 8) Then slip on the white plastic tear-drop shaped safety catch over the round end pin end-pin and re-attach it to the mounting bracket.



Important:

Ensure the Safety catch is positioned firmly on the mounting bracket.