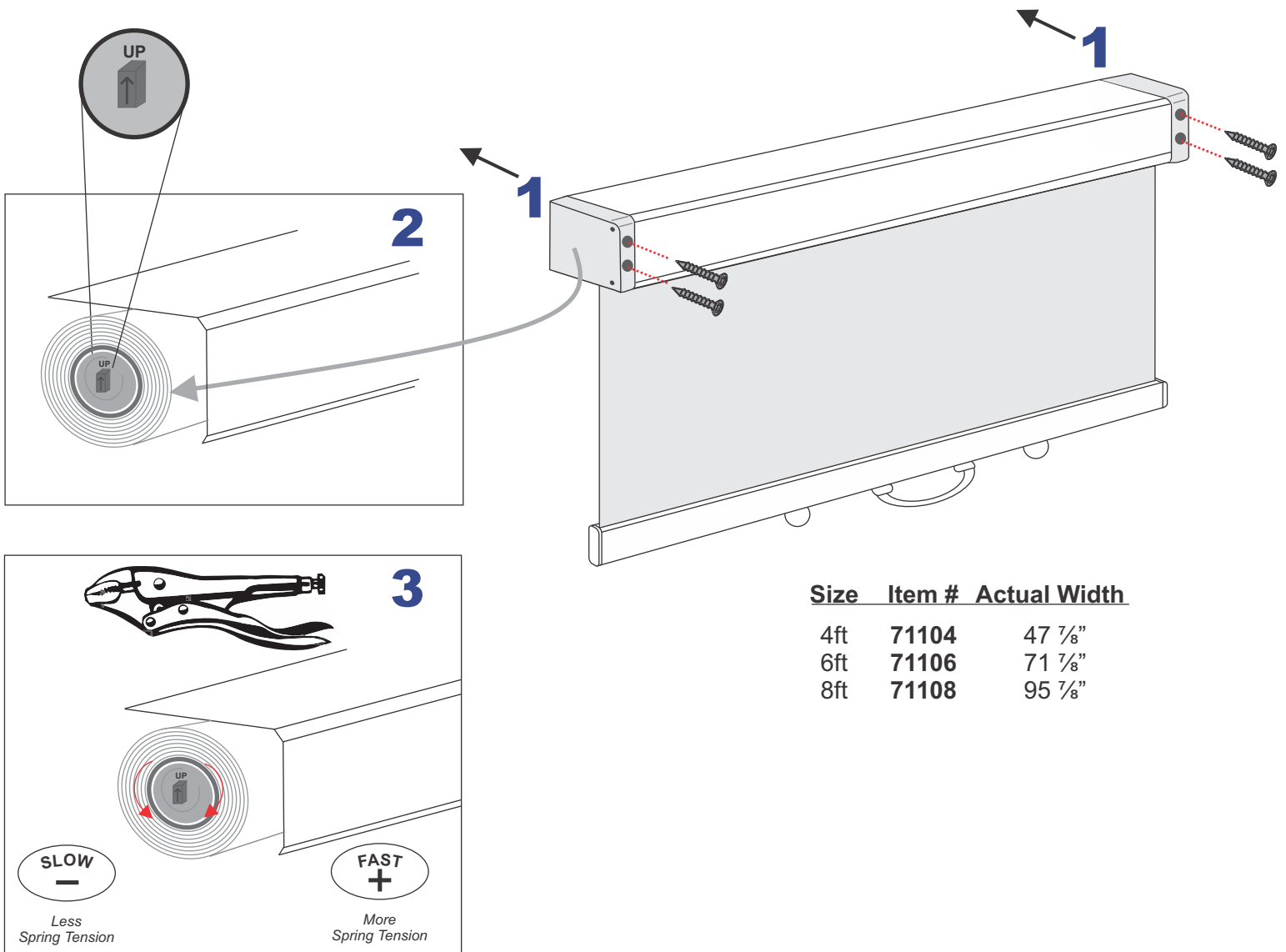


ECONO FROST

SUPERMARKET NIGHT COVERS

INSTALLATION INSTRUCTIONS

7000 Series Retrofit Cassette



INSTALLATION INSTRUCTIONS

1. Affix the night cover to the display case with the screws - through the end-caps
2. To adjust retraction speed (if needed), remove cassette from display case, and remove left end-cap
3. Use vise grips to turn the metal tab - keeping the night cover in the "Up" position
4. Once desired tension is reached (with vise grips still on metal tab), turn back the metal tab approx 1/4 turn to 3/4 turn and spring will lock tension. Night Cover must be in "Up" position for spring tension to lock

⚠ Clean the Econofrost Night Cover using a soft, non-abrasive cloth, water and soap. Retract the night cover slowly