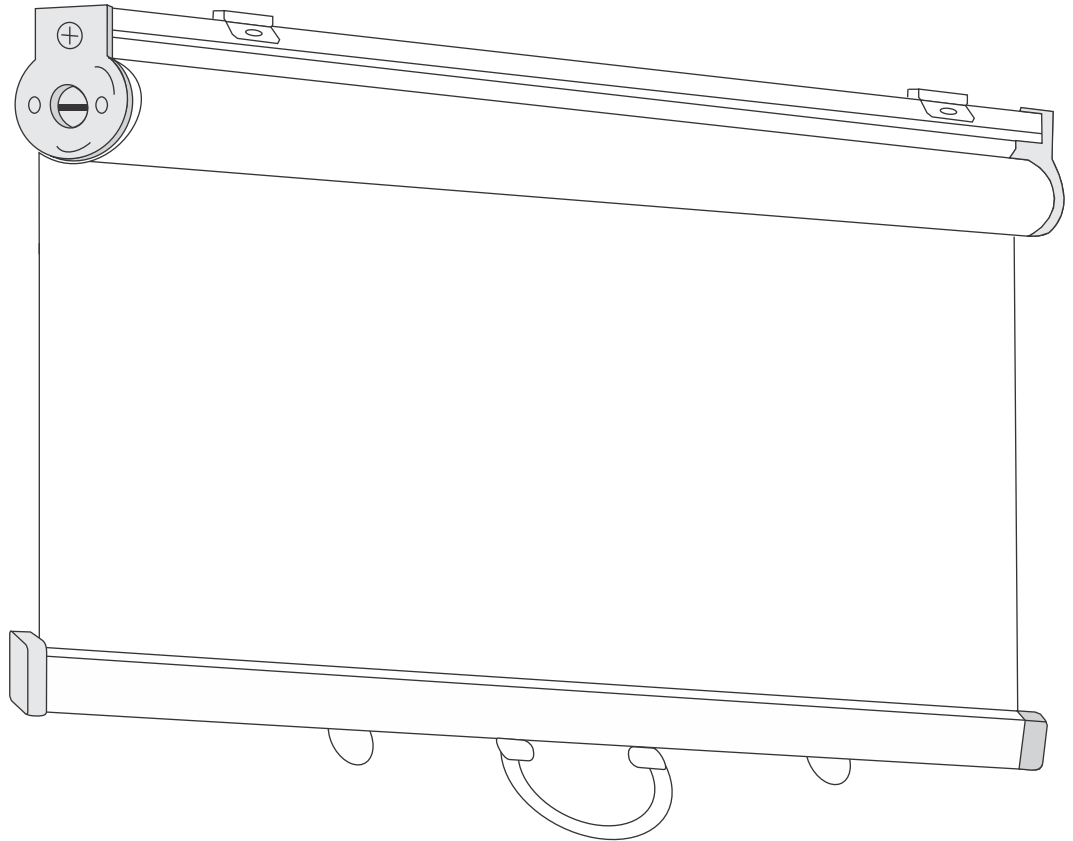
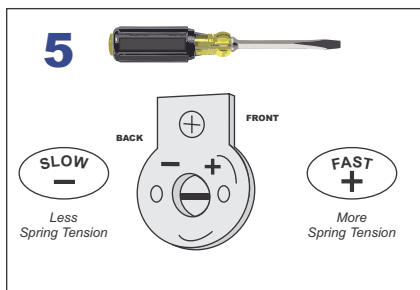
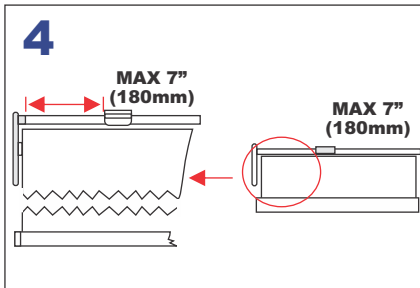
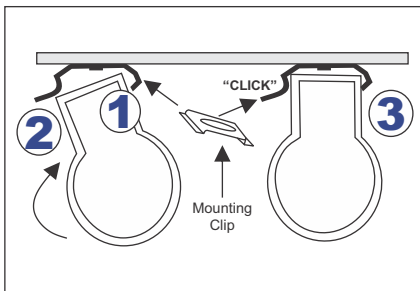


ECONO FROST

SUPERMARKET NIGHT COVERS

INSTALLATION INSTRUCTIONS

9600 Series Top Rail Traverse Night Cover



INSTALLATION INSTRUCTIONS

1. Affix the mounting clips to the display case with the screws
2. Slide night cover into both mounting clips as in picture
3. Ensure night cover 'clicks' into the mounting clips
4. Do not install the clips more than 7" (180 mm) from either end of the night cover (as in picture)
5. To adjust retraction speed (if needed), remove cassette from mounting brackets and use a blade screw driver to adjust (left side)

Size Item # Actual Width

4ft	96104-01	47 7/8"
6ft	96106-01	71 7/8"
8ft	96108-01	95 7/8"

⚠ Clean the Econofrost Night Cover using a soft, non-abrasive cloth, water and soap. Retract the night cover slowly