

ECONO FROST

REFLECTIVE NIGHT COVERS

INSTALLATION Instructions

www.econofrost.com
1.800.519.1222
1.250.743.1222

THE

XL series

Simply the best night cover on the market

Installing the ECONOFROST XL SERIES Night Cover

For more information on this and other series please visit:
http://www.econofrost.com/products_model_xl.html

Step 1.

Remove all signage and bag racks as required prior to install. Remove the Excel case canopy panels.

Step 2.

Carefully unwrap ECONOFROST XL night cover and retain the parts pack.

Step 3.

Identify the Left Hand side (LHS = round pin head) and the Right Hand side (RHS = tab spring end) of the night cover. The night cover fabric should roll off of the back.

Step 4.

Insert the XL unit into the top part of the Excel case using the pre-existing mounting brackets from the factory installed night cover.

Step 5.

Feed the handle behind and through the case structure.

Step 6.

To secure the RHS, insert the tab spring-end into the cross-shaped slot of the mounting bracket with the arrow pointing face up/facing diagonally away from the case and towards the store aisle.

Step 7.

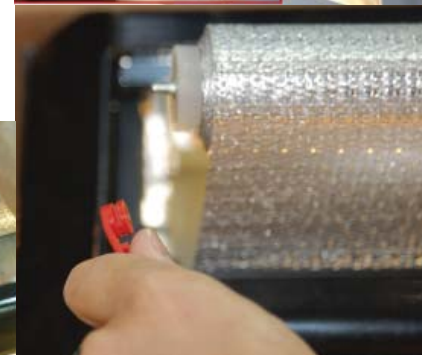
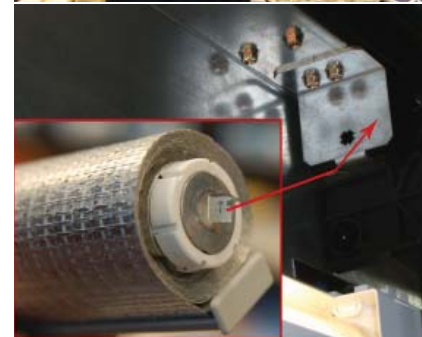
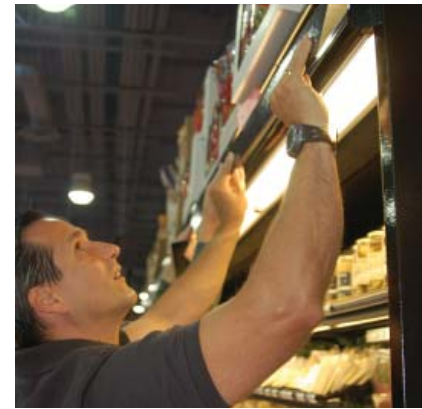
To secure the LHS, use the red safety catch (parts pack) and place over the round end pin. Next slip both into the LHS of the mounting bracket. Rotate the safety catch to an up/vertical position locking it in place in the notches of the mounting bracket.

Step 8.

Test Retraction

Step 9.

Replace Case Panels and Signage.



A Quick and Easy Install that will Last a Lifetime!

